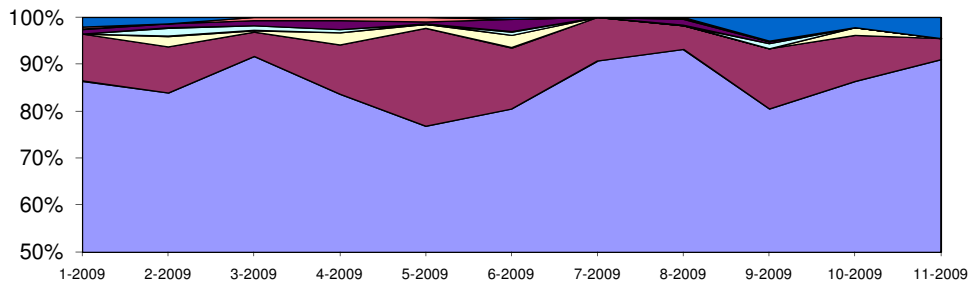


OTIF Delivery Performance to all Customers (Aerospace Springs)



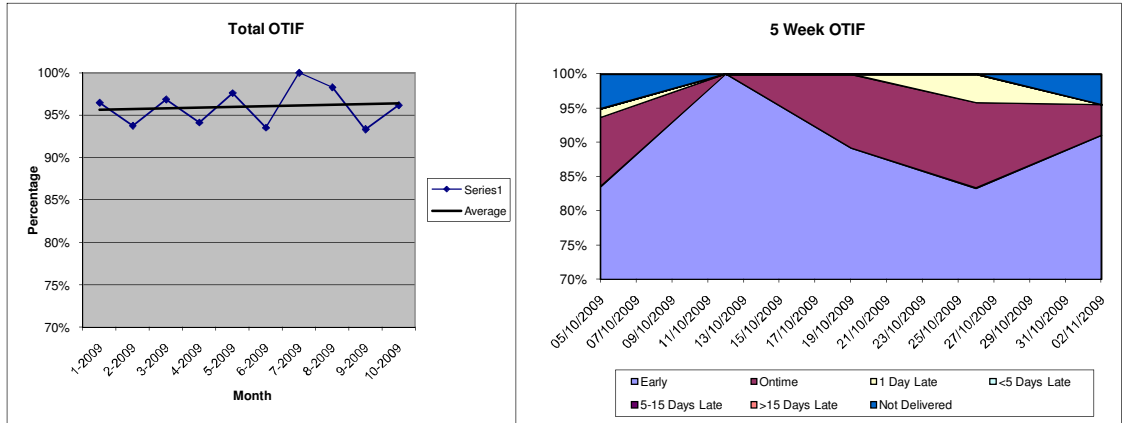
■ Early ■ On-Time □ 1 Day Late □ Upto 5 Days Late ■ 5-15 Days Late ■ >15 Days Late ■ Not Delivered

Date	W Num	Due	Received	Not Delivered	A	B	C	D	E	F	OTIF
02/11/2009	45	67	64	3	61	3	0	0	0	0	95.52%
26/10/2009	44	48	48	0	40	6	2	0	0	0	95.83%
19/10/2009	43	37	37	0	33	4	0	0	0	0	100.00%
12/10/2009	42	19	19	0	19	0	0	0	0	0	100.00%
05/10/2009	41	79	75	4	66	8	1	0	0	0	93.67%
28/09/2009	40	43	43	0	35	6	0	1	1	0	95.35%
21/09/2009	39	41	39	2	34	5	0	0	0	0	95.12%
14/09/2009	38	59	59	0	53	5	0	1	0	0	98.31%
07/09/2009	37	52	44	8	35	9	0	0	0	0	84.62%
31/08/2009	36	94	94	0	88	5	0	0	1	0	98.94%
24/08/2009	35	37	37	0	32	3	0	0	2	0	94.59%
17/08/2009	34	48	48	0	44	3	0	0	1	0	97.92%
10/08/2009	33	45	45	0	43	1	0	0	0	1	97.78%
03/08/2009	32	69	69	0	66	3	0	0	0	0	100.00%
27/07/2009	31	48	48	0	44	4	0	0	0	0	100.00%
20/07/2009	30	36	36	0	32	4	0	0	0	0	100.00%
13/07/2009	29	32	32	0	31	1	0	0	0	0	100.00%
06/07/2009	28	68	68	0	60	8	0	0	0	0	100.00%
29/06/2009	27	58	58	0	51	1	1	0	5	0	89.66%
22/06/2009	26	42	42	0	35	6	0	0	1	0	97.62%
15/06/2009	25	61	61	0	40	15	5	1	0	0	90.16%
08/06/2009	24	45	44	1	35	6	1	1	1	0	91.11%
01/06/2009	23	56	56	0	50	6	0	0	0	0	100.00%
25/05/2009	22	50	50	0	42	8	0	0	0	0	100.00%
18/05/2009	21	47	47	0	31	15	1	0	0	0	97.87%
11/05/2009	20	41	41	0	27	12	1	0	1	0	95.12%
04/05/2009	19	73	73	0	62	9	0	0	0	2	97.26%
27/04/2009	18	32	32	0	27	5	0	0	0	0	100.00%
20/04/2009	17	49	49	0	38	7	2	1	1	0	91.84%
13/04/2009	16	39	39	0	32	2	2	0	2	1	87.18%
06/04/2009	15	33	33	0	31	2	0	0	0	0	100.00%
30/03/2009	14	90	90	0	82	5	1	0	1	1	96.67%
23/03/2009	13	44	44	0	41	2	0	1	0	0	97.73%
16/03/2009	12	54	54	0	52	2	0	0	0	0	100.00%
09/03/2009	11	34	34	0	27	4	0	1	2	0	91.18%
02/03/2009	10	66	66	0	62	2	0	1	0	1	96.97%
23/02/2009	9	46	45	1	41	3	1	0	0	0	95.65%
16/02/2009	8	47	47	0	33	9	2	2	1	0	89.36%
09/02/2009	7	62	62	0	55	6	1	0	0	0	98.39%
02/02/2009	6	69	67	2	59	4	1	2	1	0	91.30%
26/01/2009	5	45	43	2	40	3	0	0	0	0	95.56%
19/01/2009	4	39	39	0	28	8	0	0	2	1	92.31%
12/01/2009	3	29	27	2	25	2	0	0	0	0	93.10%



Managing Director: S M Boyd Registered Company 121 4570 VAT Number 112 8342 02

Tel: +44 (0) 1527 523764 Fax: +44 (0) 1527 527920 Email: Info@g-o-springs.com Web: www.g-o-springs.com

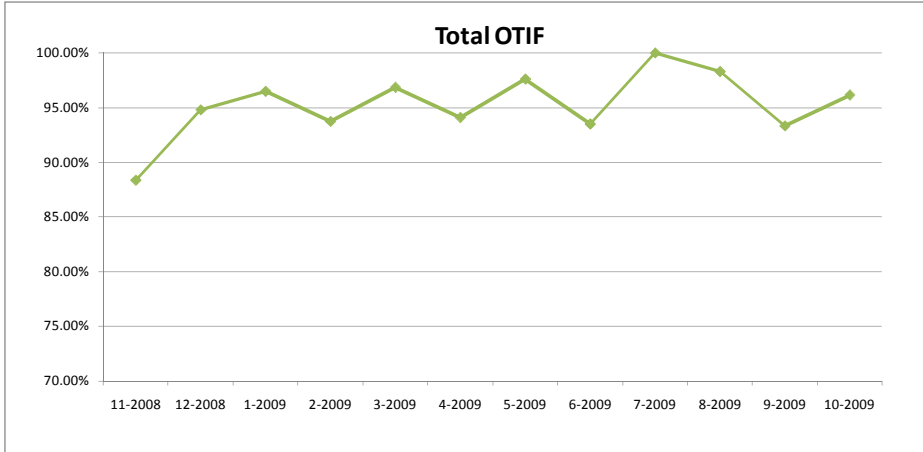


Month	Year	Con	Due	Received	Not Delivered	Early	On-Time	1 Day Late	Upto 5 Days Late	5-15 Days Late	>15 Days Late	OTIF
11	2008	11-2008	241	241	0	194	19	5	14	8	1	88.38%
12	2008	12-2008	231	229	2	197	22	4	2	4	0	94.81%
1	2009	1-2009	199	195	4	172	20	0	0	2	1	96.48%
2	2009	2-2009	224	221	3	188	22	5	4	2	0	93.75%
3	2009	3-2009	288	288	0	264	15	1	3	3	2	96.88%
4	2009	4-2009	153	153	0	128	16	4	1	3	1	94.12%
5	2009	5-2009	211	211	0	162	44	2	0	1	2	97.63%
6	2009	6-2009	262	261	1	211	34	7	2	7	0	93.51%
7	2009	7-2009	184	184	0	167	17	0	0	0	0	100.00%
8	2009	8-2009	293	293	0	273	15	0	0	4	1	98.29%
9	2009	9-2009	195	185	10	157	25	0	2	1	0	93.33%
10	2009	10-2009	183	179	4	158	18	3	0	0	0	96.17%
11	2009	11-2009	67	64	3	61	3	0	0	0	0	95.52%



Managing Director: S M Boyd Registered Company 121 4570 VAT Number 112 8342 02

Tel: +44 (0) 1527 523764 Fax: +44 (0) 1527 527920 Email: Info@g-o-springs.com Web: www.g-o-springs.com



Month	Total OTIF
11-2008	88.38%
12-2008	94.81%
1-2009	96.48%
2-2009	93.75%
3-2009	96.88%
4-2009	94.12%
5-2009	97.63%
6-2009	93.51%
7-2009	100.00%
8-2009	98.29%
9-2009	93.33%
10-2009	96.17%
Average	95.28%
Target	95.00%



Managing Director: S M Boyd Registered Company 121 4570 VAT Number 112 8342 02

Tel: **+44 (0) 1527 523764** Fax: **+44 (0) 1527 527920** Email: **Info@g-o-springs.com** Web: **www.g-o-springs.com**